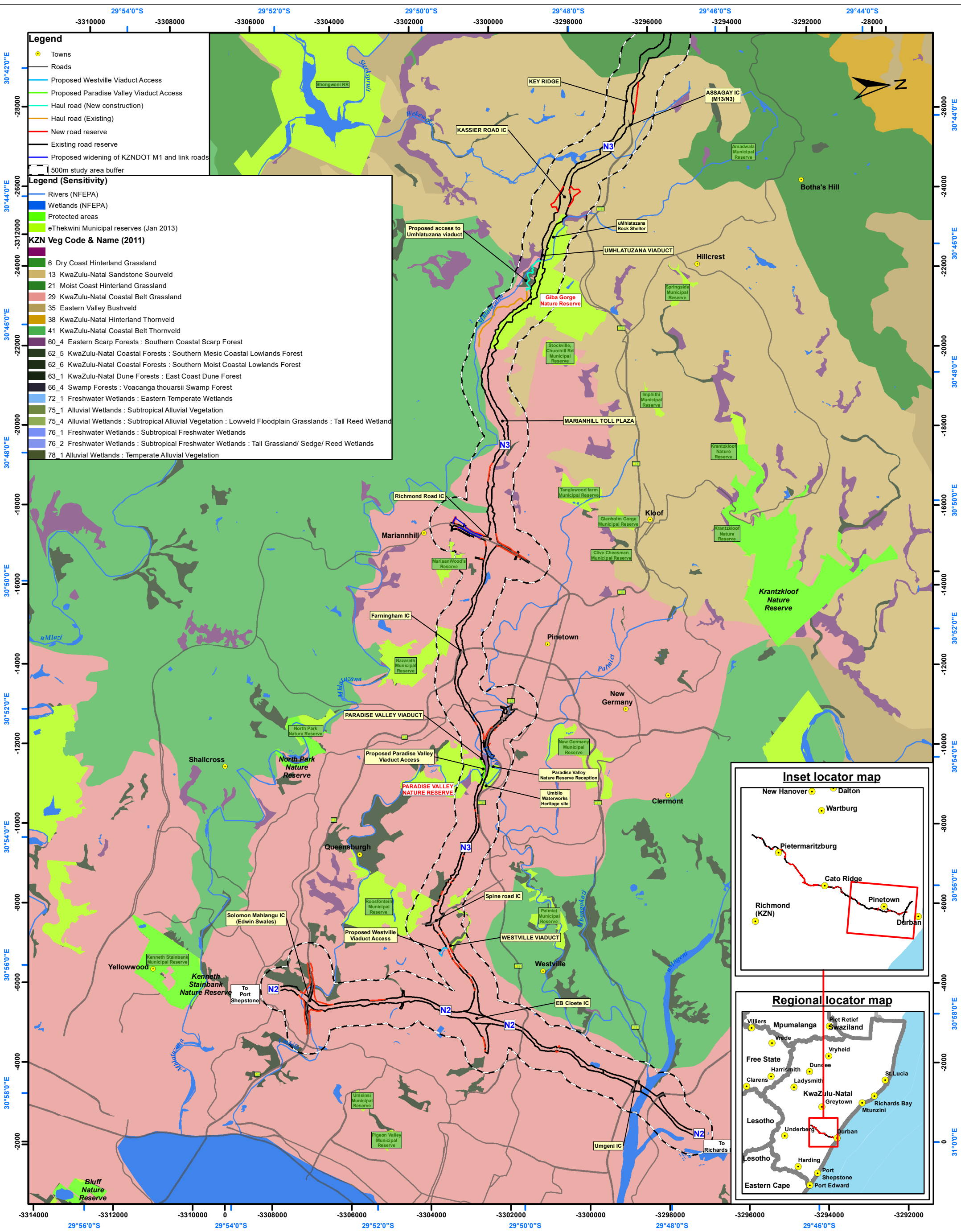


**PROPOSED N3 UPGRADES: AREAS OF CONSERVATION CONCERN**

**Environmental sensitivities**



**Legend**

- Towns
- Roads
- Proposed Westville Viaduct Access
- Proposed Paradise Valley Viaduct Access
- Haul road (New construction)
- Haul road (Existing)
- New road reserve
- Existing road reserve
- Proposed widening of KZNDOT M1 and link roads
- 500m study area buffer

**Legend (Sensitivity)**

- Rivers (NFEPA)
- Wetlands (NFEPA)
- Protected areas
- eThekweni Municipal reserves (Jan 2013)

**KZN Veg Code & Name (2011)**

- 6 Dry Coast Hinterland Grassland
- 13 KwaZulu-Natal Sandstone Sourveld
- 21 Moist Coast Hinterland Grassland
- 29 KwaZulu-Natal Coastal Belt Grassland
- 35 Eastern Valley Bushveld
- 38 KwaZulu-Natal Hinterland Thornveld
- 41 KwaZulu-Natal Coastal Belt Thornveld
- 60.4 Eastern Scarp Forests : Southern Coastal Scarp Forest
- 62.5 KwaZulu-Natal Coastal Forests : Southern Mesic Coastal Lowlands Forest
- 62.6 KwaZulu-Natal Coastal Forests : Southern Moist Coastal Lowlands Forest
- 63.1 KwaZulu-Natal Dune Forests : East Coast Dune Forest
- 66.4 Swamp Forests : Voacanga thouarsii Swamp Forest
- 72.1 Freshwater Wetlands : Eastern Temperate Wetlands
- 75.1 Alluvial Wetlands : Subtropical Alluvial Vegetation
- 75.4 Alluvial Wetlands : Subtropical Alluvial Vegetation : Lowveld Floodplain Grasslands : Tall Reed Wetland
- 76.1 Freshwater Wetlands : Subtropical Freshwater Wetlands
- 76.2 Freshwater Wetlands : Subtropical Freshwater Wetlands : Tall Grassland/ Sedge/ Reed Wetlands
- 78.1 Alluvial Wetlands : Temperate Alluvial Vegetation

