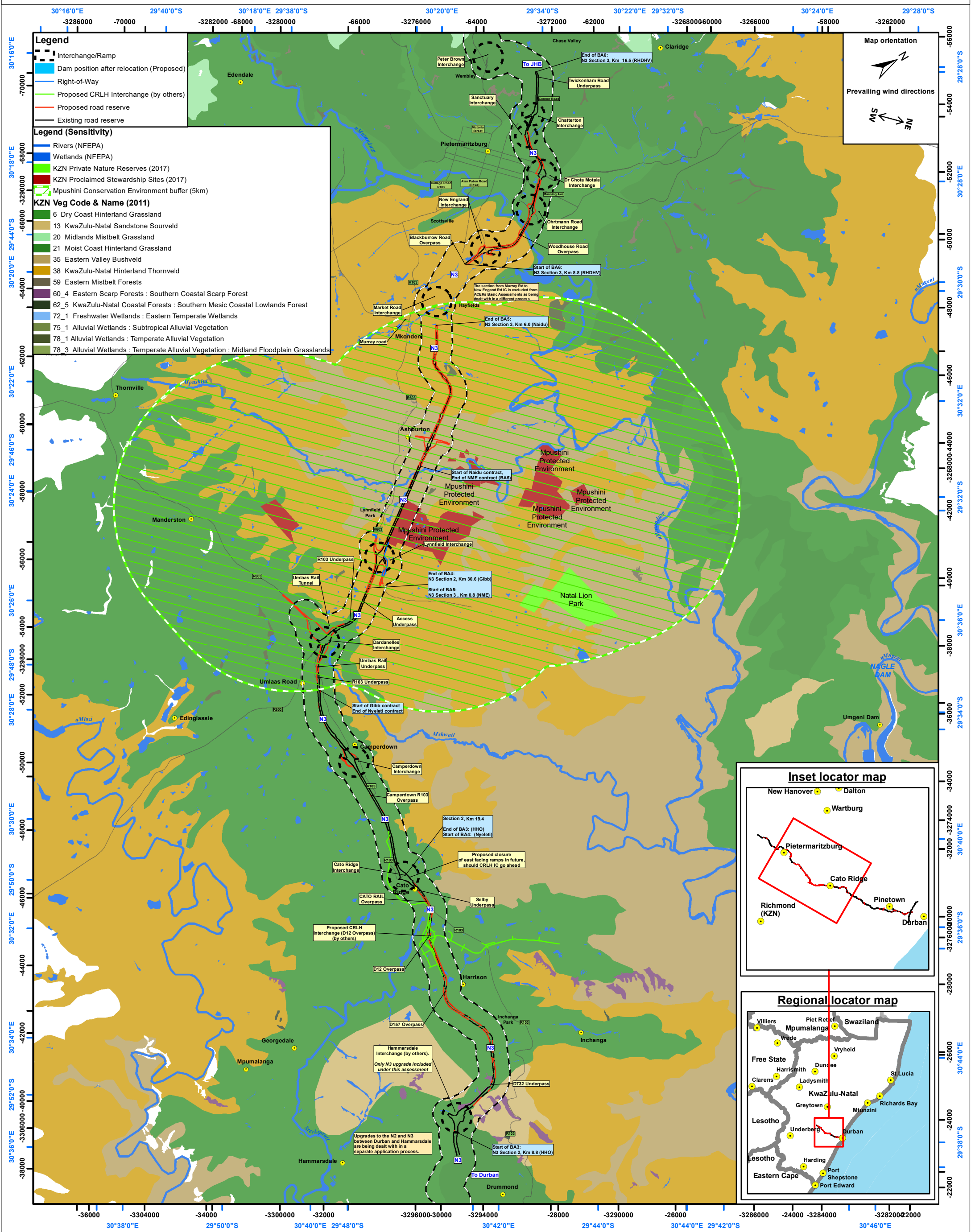


PROPOSED CAPACITY IMPROVEMENTS TO THE N3 FROM HAMMARSDALE TO PIETERMARITZBURG

Environmental features



Legend

- Interchange/Ramp
- Dam position after relocation (Proposed)
- Right-of-Way
- Proposed CRLH Interchange (by others)
- Proposed road reserve
- Existing road reserve

Legend (Sensitivity)

- Rivers (NFEPA)
- Wetlands (NFEPA)
- KZN Private Nature Reserves (2017)
- KZN Proclaimed Stewardship Sites (2017)
- Mpushini Conservation Environment buffer (5km)

KZN Veg Code & Name (2011)

- 6 Dry Coast Hinterland Grassland
- 13 KwaZulu-Natal Sandstone Sourveld
- 20 Midlands Mistbelt Grassland
- 21 Moist Coast Hinterland Grassland
- 35 Eastern Valley Bushveld
- 38 KwaZulu-Natal Hinterland Thornveld
- 59 Eastern Mistbelt Forests
- 60_4 Eastern Scarp Forests : Southern Coastal Scarp Forest
- 62_5 KwaZulu-Natal Coastal Forests : Southern Mesic Coastal Lowlands Forest
- 72_1 Freshwater Wetlands : Eastern Temperate Wetlands
- 75_1 Alluvial Wetlands : Subtropical Alluvial Vegetation
- 78_1 Alluvial Wetlands : Temperate Alluvial Vegetation
- 78_3 Alluvial Wetlands : Temperate Alluvial Vegetation : Midland Floodplain Grasslands

Map orientation

Prevailing wind directions: SW, NE

